

# *Town of Lewisboro*

P R O G R A M B R O C H U R E

## *Winter 2026*

Find us on  

PROGRAM REGISTRATION  
BEGINS THURSDAY, DECEMBER 11TH



# FOR YOUR INFORMATION

**TOWN OF LEWISBORO • DEPARTMENT OF PARKS AND RECREATION**  
**99 ELMWOOD ROAD • SOUTH SALEM, NY 10590**

## TOWN BOARD MEMBERS

Tony Goncalves, *Town Supervisor*  
Julia Hadlock  
Mary Shah  
Richard Sklarin  
Daniel Welsh

## ELECTED OFFICIALS

Deirdre Casper, *Tax Receiver*  
Janet Donohue, *Town Clerk*  
John Winter, *Highway Superintendent*  
John Pappalardo, *Town Justice*  
Susan Simon, *Town Justice*

Please check the website for Town Board meetings and updates:  
[www.lewisborony.gov](http://www.lewisborony.gov)

## PARKS AND RECREATION ADVISORY COUNCIL

Ian Harris, <i>Chairperson</i>	Richard Ellrodt
Valerie Cancro	Daniela Goldman
Jennifer Castelhana	Meg Kaplan
Brigid Chamberlain	Melissa LeSauvage
Peter Cipriano	Timi Parsons

Meets the last Thursday of each month at 7:30PM at the Lewisboro Parks and Recreation Office, 99 Elmwood Road, South Salem, NY.

## RECREATION STAFF

Nicole Caviola, *Superintendent*  
Jen Brown, *Senior Adult Director/Senior Outreach*  
Katie Coluccini, *Recreation Leader*  
Michael Portnoy, *Recreation Leader*  
Christine Reger, *Office Administrator*  
Laura A. Stone, *Recreation Assistant*  
Doreen Svendsen, *Senior Adult Bus Driver*

## PARKS STAFF

Drew Faryniarz, *Maintenance Mechanic of Equipment and Grounds*  
William Cardona, *Parks Groundskeeper*  
Michael Gallagher, *Parks Groundskeeper*

## OFFICE

Office hours:	9:00AM – 4:30PM, Monday – Friday
Holiday Closures:	December 25th – Christmas Day January 1st – New Year's Day January 19th - Martin Luther King Jr. Day February 16th – President's Day

## TELEPHONE NUMBERS

Office	(914) 232-6162
Fax	(914) 232-6165

**EMAIL** – [parks@lewisborony.gov](mailto:parks@lewisborony.gov)

**WEBSITE** – [www.lewisbororecreation.com](http://www.lewisbororecreation.com)

**FACEBOOK** – Lewisboro Parks and Recreation Department

**INSTAGRAM** – Lewisboroparks

## DIRECTORY

For Your Information.....	1-2
Cooperating Agencies.....	3-5
Community and Special Events .....	6-8
Toddler/Pre-School Activities .....	8
Youth Activities .....	8-10
Youth Sports .....	10-11
Upcoming Youth Trips .....	11-12
Adult Activities.....	12-14
Racquet Sports.....	14
Summer 2026 Camp.....	15-17
Programs for 50+.....	18-19
Registration Forms .....	20
Facilities .....	21



## TOWN EMAIL ALERTS

Stay in the know! Sign up for the Town's email alerts and you will be advised weekly of agendas, important Lewisboro events and much, much more! To sign up, visit our website at [www.lewisborony.gov](http://www.lewisborony.gov) and go to email signups or call the Town Clerk's office at (914)763-3511 for assistance.



## FOR YOUR INFORMATION

### REGISTRATION INFORMATION

Winter program registration starts on **Thursday, December 11th.**

### REGISTRATION

Registration for all programs, unless otherwise specified, is **by mail, in person on an official registration form and online via WebTrac.** We cannot accept registrations by phone, email or fax. Incomplete registrations are subject to being returned to sender. We cannot be responsible for lost or misdirected mail.

**PLEASE NOTE:** The Department does not confirm registrations by mail. You will only be contacted if there is a problem or the program is cancelled.

### CREDIT CARDS

We accept credit cards. Please set up an account if you haven't done so already. If you have ever registered for a Parks and Recreation program or permit, you have an account set up. We will be glad to assist you if help is needed. If you are new to our system, please go to [www.lewisbororecreation.com](http://www.lewisbororecreation.com) and click on create an account. A 3% service fee will appear as a separate charge from Card Connect on your bank or credit card either with online registration or registration in the office.

### REFUNDS/CREDITS

The Town of Lewisboro has a **no refund policy.** However, a refund/credit will be considered only under the following conditions:

1. A full refund/credit will be given if the program is cancelled by the Parks & Recreation Department prior to the program's start.
2. If a participant moves from Town, a full or pro-rated refund will be made based on the number of sessions the participant attended. Proof of re-location must be presented.
3. If a participant becomes ill or injured, a full or pro-rated refund will be made based on the number of sessions the participant attended. A doctor's medical note must accompany the request.

In addition to the above, a \$25.00 processing fee for all refunds/credits that are approved will be assessed, except for programs cancelled by the Parks & Recreation Department. All refund requests must be made in writing to the Superintendent of Parks & Recreation for consideration. Approved refunds will be paid by Town voucher.

### RETURNED CHECKS

If a check is returned to the Parks & Recreation Department for any reason, a cash or money order payment of \$20.00 will be required in order to re-deposit your check and offset the expenses incurred by the Town.

### INSURANCE

The Town of Lewisboro carries a Standard Liability Policy, which does not include accident coverage. Therefore, individuals who do not have their own accident coverage participate at their own risk.

### AMERICANS WITH DISABILITIES ACT



The Lewisboro Parks and Recreation Department is committed to ensuring that individuals with disabilities are able to utilize and enjoy programs and activities to the fullest extent possible. When registering, please let us know if you or a family member has any special needs that we can accommodate (such as wheelchair access, hearing aids, braille printed matter, etc.).

### LATE PICK UPS

Subject to all Town of Lewisboro sponsored programs: All participants are expected to be picked up at the assigned program end time. Any and all tardy pickups from programs will result in additional charges to cover the Town's unbudgeted expenses. The town will charge \$20.00 per every 15 minutes per participant of supervision past program end time with the first 15 minutes as a grace period unless the grace period is abused consistently.

### PROGRAM UPDATES

We are proud to announce program updates are available on our website at [www.lewisbororecreation.com](http://www.lewisbororecreation.com), Facebook and Instagram.

### PRESERVE / PARK USE REGARDING DOGS

Please be reminded that while dogs are permitted in Town parks and preserves they must be leashed at ALL times and owners are responsible for cleaning up after their dog. **OFF LEASH DOGS ARE NOT PERMITTED** in any of the Town properties. Dogs are **NOT** permitted in any of the playground areas or the pool facility at any time. For safety and sanitary reasons, dogs are not to be ran/walked on any of the athletic fields located in the parks.

### A FRIENDLY REMINDER

Our Department is asking for assistance and cooperation in helping keep our park facilities and preserves clean for the benefit of all of our patrons and their guests. Please use the trash and/or recycling receptacles provided to dispose of waste and debris. Athletic teams, clubs and groups are encouraged to police the fields, dugout/bench and spectator areas after practices and games. Please help our Parks staff keep our parks clean. Thank you.



## COOPERATING AGENCIES

### LEWISBORO LIBRARY

The Library located at 15 Main Street in South Salem offers weekly story programs for children, ongoing Mahjong, Stitch Together, book clubs and writing groups for adults, movie and craft programs for teens and adults, as well as special activities for all ages. For more information, please call (914)875-9004, sign up for the email newsletter at [info@lewisborolibrary.org](mailto:info@lewisborolibrary.org) or visit the Library website [www.lewisborolibrary.org](http://www.lewisborolibrary.org).

Save the Date: The annual Lewisboro Community Volunteer Fair will be Saturday, March 7, 2026. Come find out how you can give back to our community!

### BASEBALL

The Lewisboro Baseball Association provides In-Town and Travel baseball league play for boys and girls ages 6-16. Registration for the spring season will open in January. Opening day festivities are tentatively scheduled for April 12th. For further information, please go to the website at [www.playlewisborobaseball.com](http://www.playlewisborobaseball.com) or contact the LBA at [lewisborobaseball@gmail.com](mailto:lewisborobaseball@gmail.com).

### 40+ MEN'S BASEBALL "LEWISBORO THUNDER"

Lewisboro Baseball added a Men's Baseball team to the "Westchester-Putnam Men's Senior Baseball League" in 2024. The league is open to all Lewisboro residents who are 40 or older in the calendar year and looking to play nine innings in an established league. As the only established summer men's baseball league in Westchester, with 10 teams throughout Westchester County, we now have our very own team, "Lewisboro Thunder". The regular summer season runs from May through September, culminating in September with an all-inclusive playoff format. The 18-game season and subsequent playoff games are played on Sunday mornings at 9:00AM at Fox Valley with some away games. For more information please contact: [lewisborobaseball@gmail.com](mailto:lewisborobaseball@gmail.com).

### JOHN JAY FUTBOL CLUB

Calling the next Messi! John Jay FC is a non-profit, community-focused soccer club, focused on developing players and people through soccer. We offer year-round, professionally trained soccer programs. These include our engaging Academy program for children aged two years to fifth grade, and our more competitive travel program for students in 3rd grade through high school. We also offer a variety of summer and winter programs, camps and clinics. With the FIFA World Cup coming to the US in 2026, this year is going to be huge for soccer - come join the fun with JJFC! For more information email [director@johnjayfc.com](mailto:director@johnjayfc.com) or visit [www.johnjayfc.com](http://www.johnjayfc.com).



### NORTH EAST WESTCHESTER SPECIAL RECREATION

North East Westchester Special Recreation, an agency supported and sponsored by the Town of Lewisboro is available to children and adults with developmental disabilities from our community. North East programs offer a variety of year-round recreational activities for all ability levels, designed with the specific support needed for participant success in this environment. Programs are highly structured, staffed and closely supervised. Program goals may focus on teaching skills, fostering fun and friendships or teaching and correcting social or behavioral deficiencies. For more information, call their office at 347-4409 or visit their website at [www.northeastsspecialrec.org](http://www.northeastsspecialrec.org).

### LEWISBORO HORSEMEN'S ASSOCIATION

The Lewisboro Horsemen's Association is a volunteer run organization that seeks to promote and support the local equestrian community. We offer members multiple opportunities throughout the year to learn, train, gather socially, and enjoy riding on the trails. Members have access to riding trails across Lewisboro, including the hamlets of Vista, South Salem, Waccabuc, and Cross River. LHA's main event each year is The Fall Hunter Pace & Luncheon in Ward Pound Ridge Reservation. In addition, we host a Vet Series, popular Trivia Nights, Riding Clinics, Guided Trail Rides, a Summer BBQ and a Winter Holiday Party. We welcome members of all ages and riding abilities. Individual membership \$60, Family \$75, Junior \$50, Non-riding Supporter \$30 and Sponsor \$250. For more information visit [www.lhatrails.com](http://www.lhatrails.com) or find us on Facebook or Instagram.

Contact persons: Callie Kuntz-Bauer: (914) 438-3523

Carleton Henrich: (917) 826-2070

### LACROSSE

John Jay Youth Lacrosse offers programs for boys and girls in grades K-8. Practices begin in mid-March (weather and fields permitting) and the season concludes in early June. Registration for our Spring 2026 season will begin in December 2025! Winter programming is offered for all new and existing players and can be found by visiting our website at [JJYL.org](http://JJYL.org). For more information on our programs email JJYL at [Info@JJYL.org](mailto:Info@JJYL.org).

## COOPERATING AGENCIES

### LEWISBORO GARDEN CLUB

The Lewisboro Garden Club, a non-profit organization, was founded in 1972 to promote the art of gardening, aid in conserving natural flora and help beautify public areas. Most activities are open to residents (even if not a member) of all ages and levels of gardening experience. To join for only \$15.00/year, go to [lewisborogardenclub.org/join-us](https://lewisborogardenclub.org/join-us). More events coming for 2026 — To view and register, go to [lewisborogardenclub.org/events](https://lewisborogardenclub.org/events).

#### Upcoming Events:

**Saturday, December 20th, 4:30PM - 6:30PM** – 3rd Annual Winter Solstice Celebration, Turtle Island at Onatru Farm Park. FREE community family-friendly event to walk the lit-up trails and participate in a community fire, read poems and share winter solstice stories. Wear sturdy shoes and bring flashlights. (Families with small children invited at 4:00PM to walk the trails before dark).

**Saturday, December 27th to Thursday, January 1st, 5:00PM - 6:00PM Each Evening** - Walk the Lights at Turtle Island at Onatru Farm Park. (weather permitting) FREE family-friendly event. Wear sturdy shoes and bring flashlights.

### LEWISBORO LAND TRUST OUTDOOR PROGRAMS

The Lewisboro Land Trust has helped preserve over 1,000 acres in Lewisboro since its founding in 1994 and is committed to environmental stewardship, responsibility for nature, education of adults and children through experience, exposure and instruction. We are “linking people with the land” by maintaining the town’s preserves and offering the community many ways to use and enjoy them. Please visit us at [www.lewisborolandtrust.org](https://www.lewisborolandtrust.org) for more information.

Monthly Programs: Preschool Hikes and Guided Nature Walks.

The Lewisboro Land Trust is out on the trails every week with new opportunities and new adventures. We hope you will join us as often as possible!

Programs will be announced! For more information, registration links, and to sign up for our emails, please visit us at: [www.lewisborolandtrust.org/events](https://www.lewisborolandtrust.org/events). You can also find us on Facebook and Instagram.

### OPEN SPACE AND PRESERVES ADVISORY COMMITTEE

The Committee advises the Parks and Recreation Department, and upon request, the Town Board on issues relating to open space and preserves. The purpose of the Open Space and Preserves Advisory Committee is to make recommendations to the Town Board regarding opportunities to utilize and preserve open space. The Committee may also research inter-municipal efforts to preserve open space and recommend participation by the Town where deemed appropriate. The Committee members and Lewisboro Trail volunteers are solely responsible to maintain and create new trails in all Town Preserves. The Committee coordinates the implementation of any and all approved preserve

management plans and promotes the maintenance, improvement and creation of trails within the preserves. Finally, the Committee has created and updated the mapping system for all Town owned preserves – compatible with the Avenza mapping app for phones.

### JOHN JAY COMMUNITY TRAIL

The 8th running of the JJTRAIL Races is Sunday, April 12th starting at 9:00AM – 5k run, 4k walk, 200-meter kids Jay Dash. Registration is open now at <https://runsignup.com/JJTrail>. It’s a fundraiser for the trail building effort, the John Jay Trailblazer Scholarships, and the John Jay Boosters Track & Field and Cross-Country teams.

### 2026 NEW YEAR’S STORMWATER RESOLUTIONS - FROM THE LEWISBORO STORMWATER COMMITTEE

Please do your part to prevent contaminants from entering our lakes, streams, wetlands, and drinking water via stormwater runoff by making the following resolutions. Phosphorus is the single most important contaminant in our water and if the other nutrients necessary for growth are available, and they usually are, one pond of phosphorus will result in 500 pounds of plant growth. A little goes a long way! Please read the following possible resolutions and commit to doing as many as you can.

- I will check to see when my septic system was last pumped and if it hasn’t been done in the last 2 or 3 years (5 years is the legal maximum), I will have it pumped.
- I will use water efficiently so I won’t overload my septic system, which can shorten its life.
- I will **not** use fertilizer containing phosphorous since it is against the law.
- I will use a mulching mower that mulches grass cuttings and leaves while mowing or compost leaves and other yard waste.
- I will cover bare soil with grass seed and mulch to prevent erosion of earth and its associated phosphorus.
- I will pick up after my pets and dispose of their waste in the trash.
- If I live near a lake, stream or wetland, I will plant a native buffer or rain garden to slow the flow of rainwater or storm water. This will allow more water to soak into the ground rather than flow over it carrying pollutants directly into the body of water.
- I will plant native plants which need less water and fertilizer to thrive.
- I will leave the leaves where they fall in wooded areas where they will decompose naturally.
- I will check my car for oil and antifreeze leaks and have any leaks fixed.



## COOPERATING AGENCIES

### PUMP OUT YOUR SEPTIC SYSTEM! IT IS THE LAW!

To protect the quality of the area's drinking water, Westchester County and Lewisboro instituted a septic system inspection requirement in 2011. Septic systems are a source of phosphorus which accelerates plant and algae growth and can kill Lewisboro's lakes and watercourses, destroying much of the scenery that makes our Town such a wonderful place in which to live. This law requires that each septic system be pumped at least once every 5 years. Failure to do so may result in significant fines.

This means that if you haven't had your septic system pumped since 2020, it's time to do so NOW. Many septic systems require pumping more often than every 5 years, depending on usage or condition. Have your septic pumped out this season by an authorized Westchester County septic hauler.

Keep your copy of the septic system inspection report as proof if records get lost. Bureaucracies are not perfect and the report is the only proof that you obeyed the law!

### THE PANTRY

**NEED HELP GETTING HEALTHY FOOD? WE'RE HERE FOR YOU!** The Pantry envisions a Northern Westchester community where everyone has enough nutritious food and is empowered to thrive.

We serve an average of 700 families every week from 21 local communities, which means over 2,000 individuals every week are well nourished enough to work, study, grow, and play. We are a mostly volunteer-led organization that relies on the generosity of our volunteers - we welcome you to join our Volunteer Team: <https://thepantryny.org/volunteer>

Visit <https://thepantryny.org> for more information

## LEWISBORO EMERGENCY SERVICES – VOLUNTEER



**GOLDEN'S BRIDGE FD**



**LEWISBORO EMS**



**SOUTH SALEM FD**



**VISTA FD & EMS**



### RECRUITMENT:

The Town's volunteer EMS and Fire services need your help! Get in touch with your local department to join the ranks of Lewisboro's first responders!

### AWARENESS VIA NYS-ALERTS:

The Town of Lewisboro's Office of Emergency Management (OEM) uses NYS-Alerts to communicate during emergencies. If you want to receive these notifications, sign up with NYS Alerts by using the QR code to the right.



## COMMUNITY & SPECIAL EVENTS

### HANUKKAH CELEBRATION

Join us in celebrating the first night of Hanukkah. There will be refreshments and the lighting of the first candle.

**FOR:** Town and School District Families  
**WHERE:** Lewisboro Town House  
**WHEN:** Sunday, December 14h  
**TIME:** 5:00PM – 6:00PM

### ICE SKATING

Ice skating is available at the Lewisboro Town Park Pond when ice conditions are deemed safe. A green flag will be flown on the flagpole inside the pool area when skating is allowed. A red flag indicates unsafe skating conditions. In addition, signs are posted at the entrance to Town Park indicating whether there is skating or not. The Town Park Pond offers lights, donated by the Lewisboro Lions Club, for nighttime skating. As with all other programs and activities sponsored by the Town, individuals who do not have their own accident coverage participate at their own risk.



### ANNUAL FIREWORKS SPECTACULAR

**Mark your calendar!** The Town Board is pleased to announce that the Town of Lewisboro will again be hosting the Annual Fireworks Spectacular! The spectacular will take place on Saturday, June 27th at Onatru Farm Park. Details will be available in the 2026 Spring/Summer Brochure.

If you, your family and/or your business are interested in donating or sponsoring the Fireworks Spectacular please feel free to contact Nicole Caviola at the Recreation Department at (914)232-6162 or [NCaviola@lewisborony.gov](mailto:NCaviola@lewisborony.gov).



### LOOKING BACK

– **Maureen Koehl**, *Historian*

This year's visit to the **Lewisboro History Display** at Onatru beginning Sunday, March 1st at 2:00PM will celebrate the 146th anniversary of South Salem becoming Lewisboro. Items from the historian's collection will include new additions from Cross River and Goldens Bridge families as well as photos and maps from Lewisboro's past. – Maybe even a birthday cake! The exhibit will run through March 8 and be open during town office hours, 9 am to 4:30 pm.

**FOR:** All ages  
**WHERE:** Onatru Farm House  
**WHEN:** March 1st – March 8th  
**TIME:** 9:00AM – 4:30PM  
**FEE:** Free

### WINE AND CHEESE SOCIAL

All Lewisboro residents, ages 21 and up, are invited to join us for a relaxed and friendly evening of conversation and connection! Whether you've lived here for years or just moved in, this is a great way for new residents to meet their neighbors and for longtime residents to welcome them into our special community. Enjoy wine, cheese and light fare, and mingle with town officials and fellow community members. Don't miss this wonderful opportunity to celebrate what makes Lewisboro such a great place to call home! The best part, if you have kids, we are holding a special event for them as well just down the road!

**FOR:** Lewisboro Residents over the age of 21  
**WHEN:** Sunday, March 1st  
**WHERE:** Horse and Hound  
94 Spring St., South Salem  
**TIME:** 4:00PM – 6:00PM  
**FEE:** \$20.00 per person  
**ACTIVITY #:** 120402-A1  
**NOTE:** Cash Bar. Registration required. Please visit [www.lewisbororecreation.com](http://www.lewisbororecreation.com)

### JUICE & CHIPS SOCIAL

– **Katie Coluccini**, *Supervisor*

Headed to the Wine & Cheese Social at the Horse and Hound on March 1st? Drop your children off with us at the Lewisboro Gym for three hours of non-stop fun! We'll have a movie & popcorn, games, arts & crafts, and dance parties. This event starts at 3:30pm so that you can head over to the Horse & Hound for 4pm. Don't miss out on this chance to get out of the house, meet new neighbors, hang out with some Town officials, and drop your kids off at a safe, fun party down the road. We'll make sure they have a blast while you're also having a good time.

**FOR:** Ages 4 - 12  
**WHERE:** Lewisboro Gym  
**WHEN:** Sunday, March 1st  
**TIME:** 3:30PM – 6:30PM  
**FEE:** \$30.00 per child  
**ACTIVITY #:** 111204-B1

## SPECIAL EVENTS

### BINGO BASH

– **Katie Coluccini**, *Supervisor*

Join your friends for a fun-filled evening of bingo, prizes and delicious food. We will play Bingo in a variety of ways: full board, speed Bingo, trivia Bingo and more. Grades 2&3 will be served pizza along with their snacks and grades 4&5 will make ice cream sundaes with a ton of tasty toppings. Our goal for the night is to have fun, win some cool prizes and make memories.



**FOR:** Grades 2-5  
**WHERE:** John Jay High School Cafeteria  
**TIME:** Gr. 2&3 6:00PM – 7:30PM  
 Gr. 4&5 8:00PM – 9:30PM  
**FEE:** \$25.00/Bash

#### BASH 1

**WHEN:** Friday, Jan. 30th  
**ACTIVITY #:** 111201-E1 Gr. 2&3  
 111201-E2 Gr. 4&5

#### BASH 2

**WHEN:** Friday, Feb. 27th  
**ACTIVITY #:** 111202-E1 Gr. 2&3  
 111202-E2 Gr. 4&5

### SWEETHEART DANCE

Girls! Grab your adult guests and arrive at the Lewisboro Gym at 7:00PM in your best semi-formal attire for a night of dancing, food, games, crafts and more!!

**FOR:** Girls, ages 4+ and their adult guest  
**WHERE:** Lewisboro Gym  
**WHEN:** Friday, Feb. 6th  
**TIME:** 7:00PM – 8:30PM  
**FEE:** \$20.00/person  
**ACTIVITY #:** 110901-F1

### PRINCESS PARTY WITH RAPUNZEL & BELLE

Join us for a magical party at the Lewisboro Gym with Rapunzel & Belle. We will do meet & greets, take photos, have a snack, sing, and listen to stories. We will provide bussing for K-2 students from all KLSD elementary schools. Please note that you would like bussing on the registration form.

**FOR:** Grades Pre-K-2  
**WHERE:** Lewisboro Gym  
**WHEN:** Thursday, February 12th  
**TIME:** 4:30PM – 5:30PM  
**FEE:** \$40.00  
**ACTIVITY #:** 118001-A1



### LASERTAG FUN!

Get ready for an unforgettable Laser Tag experience! Our program features state-of-the-art laser taggers, inflatable bunkers, and a full professional field setup designed to bring high-energy action to every game. One of our experienced Game Coaches will run the event from start to finish—managing equipment, organizing teams, explaining missions, and keeping the excitement going the entire time. Participants will play a variety of thrilling game modes, including team vs. team, high score challenge, capture the flag, and other fast-paced, action-packed missions! Whether you're competitive or just in it for fun, this Laser Tag program delivers nonstop excitement, teamwork, and adrenaline-pumping adventure.

**FOR:** Grades 3-5  
**WHERE:** Lewisboro Gym  
**WHEN:** Thursday, February 12th  
**TIME:** 4:30PM – 5:30PM  
**FEE:** \$40.00  
**ACTIVITY #:** 110501-F1

### NERF WARS

– **Katie Coluccini**, *General*

Grab your favorite nerf gun and some friends and meet us at the Lewisboro Gym for target practice, a Nerf war, and dinner. First, we'll fuel up with some pizza and drinks. Next, you will be given a vest to hold your ammunition, a bandana, goggles, and time to strategize with your team. Then, you will be thrown into obstacles in an all-out Nerf war across the gym and hallways. This is your mission should you choose to accept it. Are you brave enough?

**FOR:** Grades 3-5  
**WHERE:** Lewisboro Gym  
**WHEN:** Saturday, March 21st  
**TIME:** 6:00pm – 8:00PM  
**FEE:** \$50.00/player includes dinner & a bandana  
**ACTIVITY #:** 117001-A1  
**NOTE:** Space is limited and pre-registration is required. Please bring your own Nerf Gun. We will supply the ammo!

### KIDS PAINT NIGHT

– **Nando Amico**, *Instructor*

Join us for a magical night of art, imagination, and laughter at our Kids Paint Night led by local artist Nando Amico! Perfect for young aspiring artists, this guided painting experience is all about expressing creativity while learning new skills — no experience needed!

What to Expect:

- Step-by-step painting instruction from Nando Amico
- All supplies provided (canvas, paints, brushes, aprons)
- A take-home masterpiece created by your child
- Encouragement, creativity, and lots of fun!

**FOR:** Grades 4-8  
**WHERE:** Cyrus Russell Community House  
**WHEN:** Friday, March 6th  
**TIME:** 5:30PM – 7:00PM  
**FEE:** \$45.00  
**ACTIVITY #:** 111205-C1



## SPECIAL EVENTS

### FAMILY GAME NIGHT

Bring your whole family and join us at the Lewisboro Gym for a super fun night of games & laughter! We will play music, provide snacks & drinks, and a variety of different family-friendly games and puzzles for all ages.

**FOR:** Families  
**WHERE:** Lewisboro Gym  
**WHEN:** Friday, March 13th  
**TIME:** 6:00PM – 8:00PM  
**FEE:** \$35.00/family  
**ACTIVITY #:** 116001-A1

### TODDLER / PRE-SCHOOL ACTIVITIES

#### PROGRAM NOTES:

1. The child must be the appropriate age by the **start** of the program.
2. Due to the nature of these programs, siblings can not attend.

### ADVENTURES IN STEM USING LEGO

#### – Play-Well TEKnologies

Let your imagination run wild with tens of thousands of LEGO® parts! Build engineer designed projects and use special pieces to create your own unique designs! Projects are rotated seasonally to ensure that both new and returning students can explore the endless creative possibilities of the LEGO® building system in a supportive environment.

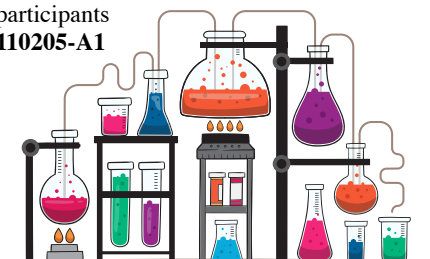
**FOR:** Ages 4-5  
**WHERE:** Cyrus Russell Community House  
**WHEN:** Fridays, 6 weeks, Jan. 16th – Feb. 27th  
 (no class 2/20)  
**TIME:** 3:15PM – 4:15PM  
**FEE:** \$195.00  
**ACTIVITY #:** 111601-B1

### LITTLE SCIENTISTS

#### – Mad Science

Come on a journey as we explore the world around us through hands-on science! Some of the topics in this session include Shapes and Structures, Water Works, Human Body, Magnetic Attraction, Lights On, Mad Mixtures and Animal Friends.

**FOR:** Ages 3-5  
**WHERE:** Cyrus Russell Community House  
**WHEN:** Mondays, 6 weeks, Jan. 12th – March 2nd  
 (no class 1/19 & 2/16)  
**TIME:** 3:30PM – 4:15PM  
**FEE:** \$280.00 – must have minimum of 8 participants  
**ACTIVITY #:** 110205-A1



## YOUTH ACTIVITIES

### BUGS, BIRDS, BEASTS AND BEYOND

#### – Mad Science

Explore the natural world and its adaptations. Observe creepy crawly bugs, make casts of animal tracks & study the feeding habits of owls as we dissect their lunch's remains. Some of the weekly topics in this session are: Bugs, Earthworks, Walloping Weather, Mission Nutrition, All about Animals, Life in the Sea, The Birds & the Beasts, Earth Awareness, Nature and The Science of Sport!

**NOTE:** Busing available upon registration

**WHERE:** Cyrus Russell Community House  
**TIME:** 4:30PM – 5:30PM  
**FEE:** \$280.00 – must have a minimum of 8 participants

#### Class 1

**FOR:** Grades K-2  
**WHEN:** Mondays, 6 weeks, Jan. 12th – March 2nd  
 (no class 1/19 & 2/16)

**ACTIVITY #:** 110205-A2

#### Class 2

**FOR:** Grades 3-5  
**WHEN:** Thursdays, 6 weeks, Jan. 15th – Feb. 26th  
 (no class 2/19)

**ACTIVITY #:** 110205-A3

### ARTIST'S PASSPORT

#### – Mad Science

Embark on an around the world cultural adventure! Explore far-off places and learn about the people who live there, from the Americas to Polynesia, from the cosmopolitan to the countryside. Experiment with Crayola products, while trying art techniques developed by local artists and artisans. Make different masterpieces each week such as Imperial Jeweled Eggs, Chinese Rattle Drums, Polynesian Tiki Masks, Aboriginal Dot Art, and more! Bring the unique creations home and build a globally inspired art gallery.

**NOTE:** Busing available upon registration

**FOR:** Grades 6&7  
**WHERE:** Cyrus Russell Community House  
**WHEN:** Thursdays, 6 weeks, Jan. 15th – Feb. 26th  
 (no class 2/19)  
**TIME:** 3:15PM – 4:15PM  
**FEE:** \$280.00 – must have a minimum of 8 participants  
**ACTIVITY #:** 110202-D1



## YOUTH ACTIVITIES

### BABYSITTING SKILLS COURSE

– Nicole Caviola, *Instructor*

Students will become fully prepared to babysit. Instruction includes responsibilities of the sitter, handling emergencies, simple first aid, feeding, diapering, bedtime and playing. All youngsters will receive a certificate of completion. This program is also suitable for children who may not be quite ready to babysit, but want to be left alone. Please bring a pencil, baby sized doll and snack/dinner/beverages to class.

**FOR:** Ages 11-14  
**WHERE:** Onatru Farm House  
**WHEN:** Tuesday & Wednesday, Feb. 3rd and 4th  
**TIME:** 5:00PM – 8:30PM  
**FEE:** \$150.00  
**ACTIVITY #:** 110801-E1  
**NOTE:** You must be present for every session in order to become certified.

### ADVENTURES IN STEM WITH LEGO

– Play-Well TEKnologies, *Instructor*

Let your imagination run wild with tens of thousands of LEGOS! Build engineer-designed projects such as chugging Steamboats, enchanted Moon Bridges and bustling Airports. Design and build as never before and explore your craziest ideas in a supportive environment.

**NOTE:** Busing available upon registration

**FOR:** Grades K-2  
**WHERE:** Cyrus Russell Community House  
**WHEN:** Tuesdays, 6 weeks, Jan. 13th – Feb. 24th  
(no class 2/17)  
**TIME:** 4:30PM – 5:30PM  
**FEE:** \$195.00  
**ACTIVITY #:** 111601-A1

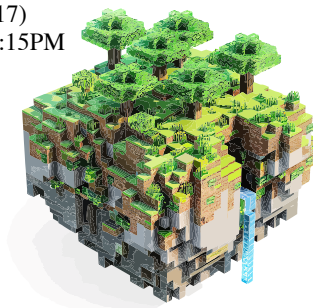
### MINECRAFT MASTER ENGINEERING WITH LEGO

– Play-Well TEKnologies, *Instructor*

Venture into the world of Minecraft in our unique LEGO experience. Get ready to build your base, craft your tools, use your Minecraft to harvest raw resources, and battle to stop the Ender Dragon from ending the world.

**NOTE:** Busing available upon registration

**FOR:** Grades 6&7  
**WHERE:** Cyrus Russell Community House  
**WHEN:** Tuesdays, 6 weeks, Jan. 13th – Feb. 24th  
(no class 2/17)  
**TIME:** 3:15PM – 4:15PM  
**FEE:** \$180.00  
**ACTIVITY #:** 111601-C1



### STEM EXPLORATIONS WITH LEGO

– Play-Well TEKnologies, *Instructor*

Level up your engineering skills with Play-Well TEKnologies and tens of thousands of LEGO parts! Apply real-world concepts in physics, engineering and architecture through engineer-designed projects such as Belt Drive Cars, Truss Bridges, Rail Racers and Pneumatic Forklifts! Design and build as never before and explore your craziest ideas in a supportive environment.

**NOTE:** Busing available upon registration

**FOR:** Grades 3-5  
**WHERE:** Cyrus Russel Community House  
**WHEN:** Fridays, 6 weeks, Jan. 16th – Feb. 27th  
(no class 2/20)  
**TIME:** 4:30PM – 5:30PM  
**FEE:** \$195.00  
**ACTIVITY #:** 111601-E1

### FIDDLEHEADS COOKING

– Fiddleheads, *Instructor*

Every class is an exploration of ingredients and a joint effort to produce a seasonal dish. After the children wash their hands, they gather around the table for a quick discussion of where our ingredients come from. Working independently or in a group, the kids learn how to use different kitchen tools safely and take turns measuring and mixing. While the dish is getting ready, we will often have a quick discussion about how food grows, who grows it, and how it got to our kitchen. At the end of each class we enjoy eating our dish together and share our feelings and thoughts about the flavor and texture.

**NOTE:** Busing available upon registration

**FOR:** Grades K-5  
**WHERE:** Cyrus Russell Community House  
**WHEN:** Wednesdays, 8 weeks, Jan. 7th – March 4th  
(no class 2/18)  
**TIME:** 4:30PM – 5:30PM  
**FEE:** \$440.00  
**ACTIVITY #:** 110302-B1

### TEEN INVESTORS

– Spark Business Academy

Learn how you can start investing at a young age in this fully interactive program! Build your own \$100,000 stock portfolio and trade stocks like Apple, Nike or Amazon with a cool investing simulation tool. This innovative experience empowers students with the tools and mindset to face future investment decisions with confidence and buy low, sell high! A solid foundation for successful future investors.

**FOR:** Grades 9-12  
**WHERE:** Cyrus Russell Community House  
**WHEN:** Wednesdays, Jan. 14th – Feb. 25th  
(no class 2/18)  
**TIME:** 6:00PM – 7:00PM  
**FEE:** \$165.00  
**ACTIVITY #:** 111401-A1



## YOUTH ACTIVITIES

### ENTREPRENEURSHIP

– Spark Business Academy

This program empowers students with an entrepreneurial mindset to develop a plan for their very own business ideas drawing from such disciplines as marketing, finance and strategy, in a supportive environment fostering teamwork. From designing marketing flyers to estimating profits, students have fun while developing business savvy!

**NOTE: Busing available upon registration**

**FOR:** Grades 6-8  
**WHERE:** Cyrus Russell Community House  
**WHEN:** Wednesdays, Jan. 14th – Feb. 25th  
 (no class 2/18)  
**TIME:** 3:15PM – 4:15PM  
**FEE:** \$165.00  
**ACTIVITY#:** 111401-A2

## YOUTH SPORTS

### RISING STARS BASKETBALL

– Thomas Tobin, *Instructor*

This is an instructional program for boys and girls interested in a non-competitive sports environment where fundamentals and skills of basketball such as dribbling, shooting and passing are explored in an inclusive, controlled setting. It is also a great opportunity for siblings to play together.

**FOR:** Grades K-12  
**WHERE:** JJMS Old Gym  
**WHEN:** Saturdays, 6 weeks, Jan. 10th – Feb. 21st  
 (no class 2/14)  
**MAKEUP:** Feb. 28th  
**TIME:** 3:00PM – 4:00PM  
**FEE:** \$90.00  
**ACTIVITY #:** 111003-A1

### WINTER VOLLEYBALL

– Prodigy Athletics, *Instructor*

All aspects of the game are taught through drills and exercises that focus on bumping, setting, spiking, hitting and serving. This program is designed for the beginning to intermediate player and includes a focus on critical life skills such as leadership and teamwork.

**Note: Busing available upon registration**

**WHERE:** Lewisboro Gym  
**WHEN:** Wednesdays, 6 sessions,  
 Jan. 14th – Feb. 25th (no class Feb.18th)  
**FEE:** \$150.00

#### Class 1

**FOR:** Grades 6-8  
**TIME:** 3:15PM – 4:15PM  
**ACTIVITY #:** 111701-A1

#### Class 2

**FOR:** Grades 3-5  
**TIME:** 4:30PM – 5:30PM  
**ACTIVITY #:** 111701-B1

## YOUTH SPORTS

### MULTI SPORTS & GAGA DAY

– A1 Athletics

Come spend the day with us! Our programs offer children the opportunity to be active and engaged in activities. Cooperative games, sports, field activities, and games are taught and played throughout the program.

**FOR:** Grades K-5  
**WHERE:** Lewisboro Gym  
**WHEN:** Monday, Jan. 19th, 9:00AM – 3:30PM  
**ACTIVITY #:** Full Day - 111502-A1  
 9:00AM – 12:00PM - 111502-A2  
 12:30PM – 3:30PM - 111502-A3  
**FEE:** \$120.00 – full day (must bring lunch)  
 \$65.00 - half day (either morning or afternoon)



### PICKLEBALL FOR KIDS

- A1 Athletics

Serve, volley, and rally your way to fun! Kids will learn the basics of Pickleball, including serving, scoring, and teamwork, in a playful, supportive environment. Perfect for first-time players, this class boosts coordination, confidence, and hand-eye skills while making new friends.

**Note: Busing available upon registration**

**WHERE:** Lewisboro Gym  
**WHEN:** Tuesdays, 6 sessions:  
 Jan. 13th – Feb. 24th (no class 2/17)  
**FEE:** \$165.00 per participant

#### Class 1

**FOR:** Grade 6  
**TIME:** 3:15PM – 4:15PM  
**ACTIVITY #:** 150105-D1

#### Class 2

**FOR:** Grades 3-5  
**TIME:** 4:30PM – 5:30PM  
**ACTIVITY #:** 150105-D2

## YOUTH SPORTS

### OPEN GYM

We're opening the gym this winter for Open Gym Basketball — the perfect place to shoot around, play pickup games, and hang out with friends or family in a chill, supervised environment. There are no drills, no coaches, and no pressure — just a chance to play the game you love your way. You decide how to spend your time — just show up, bring your energy, and get ready to hoop!

**FOR:** Town of Lewisboro & KLSD Residents  
**WHERE:** Lewisboro Gym  
**BRING:** A basketball, water bottle, sneakers.

#### MS & HS Open Gym Sessions:

**FEE:** \$10.00 per person  
**WHEN:** Wednesdays, Jan. 14th – Feb. 22nd  
**MS STUDENTS:** 7:30PM – 8:30PM  
**HS STUDENTS:** 8:30PM – 9:30PM

#### Family Open Gym Sessions:

**FEE:** \$20.00 per family  
**WHEN:** Sundays, Jan. 18th – March 1st  
**FAMILIES:** 6:00PM – 7:30PM

### BASKETBALL SPRING TRAINING

#### – A1 Athletics

Calling all young hoop dreamers! Lace up your sneakers and get ready for a slam-tastic time at A1 Athletics' Youth Basketball Introduction Class! Dribble, shoot, and score your way through high-energy activities and exciting challenges led by our coaches. Learn the art of passing, those jump shots and defend like a pro! But it's not all about skills – it's about the thrill of the game, the camaraderie, and the love of the game! Make new friends, build confidence, and discover the superstar within you!

**NOTE:** Busing available upon registration

**FOR:** Grades K-2  
**WHERE:** Lewisboro Gym  
**WHEN:** Tuesdays, 4 sessions:  
 March 3rd – March 24th  
**TIME:** 4:30PM – 5:30PM  
**FEE:** \$110.00 per participant  
**ACTIVITY #:** 110601-A3



## UPCOMING YOUTH TRIPS

### HOLIDAY ADVENTURE WEEK

The kids are off from school with nothing to do? Get ready for an unforgettable school break at our Holiday Adventure Week! A mixture of fun trips offer a variety of fun-filled activities designed to make the Winter break extra special for kids in grades 4-8. Pick and choose which days you would like to attend or sign up for the entire week at a discounted rate! We look forward to spending time with your child(ren).

**FOR:** Grades 4-8  
**WHERE:** Depart/Return at Town Park  
**FEE:** \$450.00 for the week or individual fees are listed below.

**ACTIVITY #:** 111801-A1 – All days  
**NOTE:** SPACE IS LIMITED-REGISTRATION DEADLINE JANUARY 30TH

#### Tuesday, February 17th – Ice Skating/IMAX Movie

Our day will start at Brewster Ice Arena for ice-skating, head to lunch, and then on over to AMC Theaters for an IMAX movie.

**TIME:** 9:00AM – 4:00PM  
**FEE:** \$110.00  
**ACTIVITY #:** 111801-A2  
**NOTE:** Popcorn/drink is included. Pack lunch or send money to purchase lunch.

#### Wednesday, February 18th – Snow Tubing, Catamount

**TIME:** 9:00AM – 4:00PM  
**FEE:** \$105.00  
**ACTIVITY #:** 111801-A3  
**NOTE:** Pack lunch or send money to purchase lunch.



#### Thursday, February 19th – Go Kart Racing, Bowling, and Arcade

**TIME:** 9:00AM – 4:00PM  
**FEE:** \$125.00 – includes lunch  
**ACTIVITY #:** 111801-A4  
**NOTE:** Lunch included, send money for additional arcade credits.

#### Friday, February 20th – Arcade and Climb Adventure, Palisades Mall

Our day will start at Dave and Busters and then off to a Climbing Adventure at the Palisades Mall.

**TIME:** 9:00AM – 4:00PM  
**FEE:** \$125.00  
**ACTIVITY #:** 111801-A5  
**NOTE:** Lunch included, send money for additional arcade credits.



## UPCOMING YOUTH TRIPS

### WINTER BREAK CHILL ZONE

– Katie Coluccini, *Supervisor*

School's out for winter break! Join us for 4 days of non-stop fun with engaging activities and theme days. Your child will participate in pajama day with a movie and popcorn, cookie decorating, scavenger hunts, indoor snowball fights, story time, and an ice-skating trip complete with hot chocolate! The coziest winter break camp is just around the corner at Lewisboro Elementary. Pack snacks and bring lunch Tuesday-Thursday and we'll provide a pizza party on Friday. We can't wait to hang with you – it's going to be SNOW much fun.

<b>FOR:</b>	Grades K-3	
<b>WHERE:</b>	Lewisboro Gym	
<b>WHEN:</b>	Tuesday – Friday, Feb. 17th – 20th	
<b>TIME:</b>	9:00AM – 4:00PM	
<b>FEE:</b>	\$340/All 4 days or \$95/day	
<b>ACTIVITY #:</b>		
	All 4 Days:	<b>111901-B1</b>
	Tuesday, Feb. 17th:	<b>111901-B2</b>
	Wednesday, Feb. 18th:	<b>111901-B3</b>
	Thursday, Feb. 19th:	<b>111901-B4</b>
	Friday, Feb. 20th:	<b>111901-B5</b>

### AQUATOPIA WATERPARK & ARCADIA AT CAMELBACK MOUNTAIN RESORT

– Michael Portnoy, *Supervisor*

Come enjoy your day off from school for a fun filled day at USA's #1 indoor waterpark. With wild slides, fun rides, cozy cabanas and more, it's everything you want from Camelback Mountain Resort. Not only will we be slippin' and slidin' we will be visiting Arcadia, the mega arcade! This two-level Poconos arcade has it all including video games, rides and prizes — lots and lots of prizes. Rack up high scores to redeem your tickets for a new toy. Then, do it again.

<b>FOR:</b>	Grades 4-8
<b>WHERE:</b>	Camelback Mountain Resort in Tannersville, PA
<b>WHEN:</b>	Friday, March 6th (no school)
<b>TIME:</b>	Town Park Depart/Return, 8:30AM – 8:00PM
<b>FEE:</b>	\$170.00
<b>ACTIVITY #:</b>	<b>115001-B1</b>
<b>NOTE:</b>	Meals and arcade cards are provided. Lunch is at McDonalds and pizza dinner will be served at the arcade. We recommend packing a snack and water or sending extra money for a snack.

### MARITIME AQUARIUM TRIP

– Katie Coluccini, *Supervisor*

Enjoy the day off from school amongst the sting rays, sharks, and fish of our oceans at the Maritime Aquarium in Norwalk, CT! We will spend the day enjoying the exhibits, seeing a 4D movie, and learning about sea life. join us for an exciting learning opportunity and day of fun, including lunch at McDonald's!

<b>FOR:</b>	Grades K-3
<b>WHERE:</b>	Maritime Aquarium, Norwalk, CT
<b>WHEN:</b>	Friday, March 6th (no school)
<b>TIME:</b>	9:00AM depart Town Park 3:00PM arrive at Town Park
<b>FEE:</b>	\$105.00
<b>ACTIVITY #:</b>	<b>115001-A1</b>

## ADULT ACTIVITIES

### YOGA

– Tricia Keane, *Instructor*

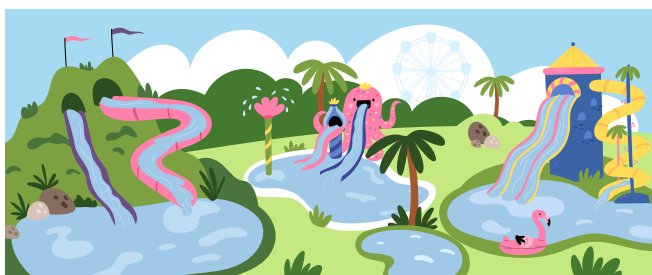
Yoga has been revered for thousands of years for its many positive effects on the mind and body. A yoga practice benefits every system in the body, resulting in greater strength and flexibility. Yoga is also an excellent antidote to stress and anxiety. You will truly learn to relax. Class consists of poses designed to stretch your body and release tension, followed by a period of relaxation. This class is appropriate for beginners through intermediate levels.

You should discuss any medical conditions with your doctor before beginning this or any other exercise program.

<b>FOR:</b>	Adults, 18 years of age and older
<b>WHERE:</b>	Onatru Farm House – Yoga Studio
<b>WHEN:</b>	Thursdays, 8 weeks, Jan. 8th – March 5th (no class 2/19)
<b>FEE:</b>	\$200.00
<b>NOTE:</b>	Participants must supply a yoga mat and be able to transition from the floor to a standing position.

<b>CLASS 1</b>	
<b>TIME:</b>	9:45AM – 11:00AM
<b>ACTIVITY #:</b>	<b>120101-A1</b>

<b>CLASS 2</b>	
<b>TIME:</b>	11:15AM – 12:30PM
<b>ACTIVITY #:</b>	<b>120101-A2</b>



## ADULT ACTIVITIES

### GENTLE EVENING YOGA

– Jo Ann Hickey, *Certified Kripalu Yoga Instructor*

Come explore your own body with as much or as little intensity as you like. This class will focus on functional mobility, how to be comfortable in your own skin, how to age gracefully while moving gracefully with confidence and flexibility. We will practice moving with the breath, feeling our bodies speak to us. All levels are welcome with an emphasis on safe yoga for those over 50. The class is 1 hour with the last 10 minutes devoted to meditation.

You should discuss any medical conditions with your doctor before beginning this or any other exercise program.

**FOR:** Adults, 18 years of age and older  
**WHERE:** Lewisboro Gym  
**TIME:** 6:30PM – 7:30PM

#### CLASS 1

**WHEN:** Wednesdays, 8 weeks, Jan. 7th – March 4th  
(no class 2/18)

**FEE:** \$160.00  
**ACTIVITY #:** 120305-D1

#### CLASS 2

**WHEN:** Wednesdays, 6 weeks,  
March 18th – April 29th  
(no class 4/1)

**FEE:** \$120.00  
**ACTIVITY #:** 120305-D2

### ESSENTRICS

– June Bird, *Instructor*

Essentrics is designed to work and rebalance the full body, engage all the joints and muscles. It is a low impact activity and non-aerobic. It will rapidly change and tone your body through a dynamic combination of stretching and strengthening. It will improve your posture, increase your range of motion, improve your balance, aid in pain relief, and promote healing.

**FOR:** Adults, 18 years of age and older  
**WHERE:** Lewisboro Gym  
**WHEN:** Wednesdays, 8 weeks, Jan. 7th – March 4th  
(no class 2/18)  
**TIME:** 9:30AM – 10:30AM  
**FEE:** \$144.00  
**ACTIVITY #:** 120306-B1



### PILATES

– Michelle Saccurato, *Instructor*

Looking to strengthen your core, improve flexibility, and enhance mind-body awareness? Join us for an energizing workout designed to support a healthy back and overall well-being! This session will incorporate a weighted Pilates ring for added resistance, making your workout even more effective.

**FOR:** Adults, 18 years and older  
**WHERE:** Onatru Farm House Yoga Studio  
**WHEN:** Tuesdays, 8 weeks, Jan. 13th – March 10th  
(no class 2/17)  
**TIME:** 11:00AM – 12:00PM  
**FEE:** \$160.00  
**NOTE:** Please bring a mat, dumbbells and water bottle.  
**ACTIVITY #:** 120601-A1  
**NOTE:** Please bring a mat, dumbbells and water bottle.

### RETRO LOW/TONE

– Michelle Saccurato, *Instructor*

Energizing workout that blends classic low-impact cardio with targeted toning exercises! Set to upbeat retro music, this class begins with a dynamic warm-up and moves into a full-body aerobic workout designed to get your heart pumping without the high-impact stress on your joints. After cardio, we'll head to the floor for focused strength training, core work, and ab exercises to tone and sculpt. Each session ends with a relaxing full-body stretch to leave you feeling refreshed, strong, and balanced. Perfect for all fitness levels!

**FOR:** Adults, 18 years of age and older  
**WHERE:** Onatru Farm House Yoga Studio  
**WHEN:** Fridays, 8 weeks, Jan. 16th – March 13th  
(no class 2/20)  
**TIME:** 10:00AM – 11:00AM  
**FEE:** \$160.00  
**ACTIVITY #:** 120601-A2  
**NOTE:** Please bring a mat, dumbbells and water bottle.

### ADULT PAINT NIGHT

– Nando Amico, *Instructor*

Unleash your creativity with a brush in one hand and your favorite beverage in the other!

Join us for a fun and relaxing evening of painting, laughter and self-expression led by talented local artist **Nando Amico**. Whether you're a seasoned painter or a complete beginner, Nando will guide you step by step through creating your own unique masterpiece.

- Grab a friend and bring your own favorite snack & beverage
- All painting materials are provided

**FOR:** Adults, 21 years of age and older  
**WHERE:** Cyrus Russell Community House  
**WHEN:** Friday, March 6th  
**TIME:** 7:30 – 9:30PM  
**FEE:** \$45.00  
**ACTIVITY#:** 120401-A1



## ADULT ACTIVITIES

### MEN'S BASKETBALL

This is an opportunity to have fun and gain physical fitness. The program will focus on pick-up games, with teams formed, on a weekly basis, on-site. The pick-up games are not part of a regularly scheduled season of competition or a championship series. Instead, it is a more-or-less spontaneous game, with teams often made up on the spot. There are no repercussions beyond the final score in terms of standings or future commitment. Participants must wear sneakers and bring their own water bottles.

- FOR:** Adults, 18 years and older  
**WHERE:** John Jay High School Gym  
**WHEN:** Thursdays, Dec. 11th – Feb. 26th – JJHS Gym  
 Mondays, Dec. 22nd & 29th – Lewisboro Gym  
**TIME:** 8:30PM – 10:00PM  
**FEE:** \$10.00 for Residents/night  
 \$15.00 for Non-Residents/night  
 Cash or check only! Or pre-register on our website by credit card.  
**ACTIVITY #:** 420302-A1  
**NOTE:** When KLSD schools are closed due to inclement weather, program is cancelled and will not be made up.  
**BRING:** Sneakers, water, and a basketball.

## RACQUET SPORTS

### PICKLEBALL

The Town of Lewisboro will be offering our residents an indoor location for pickleball play. There will be three indoor courts at the Lewisboro Recreation Gym, 79 Bouton Road, South Salem, NY. It will be first come – first served. Permits are required for indoor play.

The pickleball season will run from November 12th to March 31st, 2026 weather permitting and no holidays.

#### Indoor hours

- Adults:** Mondays, Thursdays & Fridays: 10:00AM – 1:00PM  
 Wednesdays: 10:45AM – 1:00PM  
**Family:** Sundays: 8:00AM – 12:00PM  
 Tuesdays: 7:00PM – 9:00PM

#### Photo Permits

A photo ID system has been implemented for indoor pickleball permits. To register and get your photo permit for pickleball you will need to register via mail, on our website and/or visit our office during office hours. You will need to get a photo ID taken at our office before using the facility.

#### Fees:

- |   |          |
|---|----------|
| Resident/School District Individuals                | \$175.00 |
| Resident/School District Families                   | \$290.00 |
| Resident/School District Senior Adults (must be 65) | \$100.00 |
| Non-Resident Individual                             | \$235.00 |
| Guests of permit holders (cash/check)               | \$10.00  |

## RACQUET SPORTS

### PICKLEBALL

– Rob Delman, *Instructor*

**Introduction to Pickleball:** This is for players new to the game, wants a refresher, or who wants to play at a slower pace.

**Pickleball Advanced Beginner +:** This class is for the player who has played before and knows how to keep score. We will be focusing on positioning and developing an overall strategy to win more matches.

- FOR:** Adults, 18 years and older  
**WHERE:** Lewisboro Gym  
**NOTE:** Please bring a racquet and participants **MUST** be pickleball permit holders. Each class has a **maximum** of four players which provides more time for one-on-one instruction and feedback

#### CLASS 1

**WHEN:** Tuesdays, 5 sessions, Jan. 13th – Feb. 10th

	INTRODUCTION	ADVANCED BEG+
<b>TIME</b>	9:00AM – 10:30AM	10:30AM – 12:00PM
<b>ACTIVITY</b>	150202-B1	150202-B2
<b>FEE</b>	RES \$240 / NON RES \$270	RES \$240 / NON RES \$270

#### CLASS 2

**WHEN:** Tuesdays, 5 sessions, Feb. 24th – March 31st  
 (no class 3/3)

	INTRODUCTION	ADVANCED BEG+
<b>TIME</b>	9:00AM – 10:30AM	10:30AM – 12:00PM
<b>ACTIVITY</b>	150202-C1	150202-C2
<b>FEE</b>	RES \$240 / NON RES \$270	RES \$240 / NON RES \$270

### NEIL VREELAND MEMORIAL PLATFORM TENNIS COURTS

The Katonah-Lewisboro School District along with the Town of Lewisboro offers our residents three platform tennis courts for play with lights for nighttime play. The courts are located on the John Jay High School Campus at 60 North Salem Road, Cross River, NY.

#### Platform Tennis Court Fees

(September 3rd, 2025 – August 31st, 2026)

- |  |          |
|--|----------|
| Resident/School District Family              | \$200.00 |
| Resident/School District Individual          | \$125.00 |
| Resident/School District Senior (must be 65) | \$80.00  |
| Non-Resident                                 | \$275.00 |



# SUMMER 2026 CAMP INFORMATION

## SUMMER JOBS AVAILABLE

Summer will be here before you know it! The Lewisboro Parks and Recreation Department will need staff for the pool and day camps. If you are interested in being a lifeguard, gate attendant, or part of the camp staff, please go to [www.lewisbororecreation.com](http://www.lewisbororecreation.com) and fill out an application. All applicants must be 16 years of age or older before the camp/pool season begins. We are accepting all applications now and will have interview times available for college-aged students over winter and spring break. Apply today!

## DAY CAMPS

The Town of Lewisboro Parks and Recreation Department is happy to bring back camps this summer. Camp is tentatively scheduled to start on Monday, June 29th, 2026 and run through Friday, August 7th, 2026 for all camps. There will be no camp on Friday, July 3rd.



The Town of Lewisboro Parks and Recreation Department and our camp staff are dedicated to making your child's summer camp experience a rewarding and enjoyable one! There have been some important changes made to our camp structure. Please read all information carefully under each camp before registration.

### Day Camp Registration – Little Explorers & Main Event

#### 1. Day Camp Registration Information

Our department accepts credit cards (please note there is a 3% service charge for usage). We will conduct registration both online and in person.

Registration for Little Explorers and Main Event camps will start on Monday, March 2nd, 2026 with the following schedule (for in-person registration):

Weekdays starting Monday, March 2: 9:00AM - 4:30PM

Extended Hours:

Tuesday, March 3rd: 9:00AM - 7:30PM

Thursday, March 5th: 9:00AM - 7:30PM

Saturday, March 7th: 9:00AM - 12:00PM

- 2. No mail in registrations or walk-in registrations will be accepted before March 2nd.**
- 3. Please indicate the grade your child is entering in the fall of 2026 on the registration form.**
- 4. Persons must complete all of the day camp registration material and return it to our office no later than Friday, April 10th.** These materials are **in addition** to the online registration and includes the camp registration form, behavior policy, media permission form, and trip/insect repellent/sunscreen permission form. In addition, **you must submit a copy of your child's immunizations from your doctor's office including a copy of your child's COVID vaccine if applicable.**

**PLEASE NOTE:** Any camp registration received on or after Wednesday, April 1st will be charged a \$100.00 late fee.

## LITTLE EXPLORERS CAMP

(Pre-K must be 3 before 6/30/2026, entering Kindergarten, or entering 1st Grade in the Fall of 2026)

This program will provide a full day of activities and fun! Activities such as arts and crafts, music, dance, science, nature, stories, outdoor play and fitness, special events, entertainment and a few local trips will be enjoyed. Our staff is composed of qualified, caring adults and mature, experienced, caring college and high school students who are dedicated to making your child's camp program a safe and fun experience.

<b>WHEN:</b>	Monday - Friday, June 29th – August 7th (No camp July 3rd) Parent/camper orientation will be in June (TBD)
<b>WHERE:</b>	TBD
<b>HOURS:</b>	8:45AM – 2:45PM
<b>FEE:</b>	\$1,175 – resident/school district fee \$1,600 – non-resident fee (registration accepted after April 13th)

#### NOTE:

- Swimming will be provided at the Town Park's interactive and main pools.
- Transportation is provided at no cost from specific points in Lewisboro. Refer to bus transportation section below for further details. Any child who has reached the age of 4 years by the start of camp may sign up for bus transportation.
- Children **MUST** be toilet trained.
- Birth certificate is required at time of registration for Pre-K campers.

**ACTIVITY #:** 330101-A1 – Pre-K  
330102-A1 – Kindergarten  
330103-A1 – 1st Grade

## BUS TRANSPORTATION

(Little Explorers, Main Event, Teen Treks Camps)

**Chris DiLillo, Program Coordinator**

<b>South Salem:</b>	Former Lewisboro Elementary School
<b>Goldens Bridge:</b>	Increase Miller Elementary School
<b>Cross River:</b>	John Jay High School
<b>Vista:</b>	Vista Community House, Meadow Pond Elementary School, Oakridge Shopping Center
<b>Katonah:</b>	Katonah Elementary School
<b>Town Park:</b>	Teen Treks only (Poolside)

Although there is no cost for transportation, **YOU MUST REGISTER FOR THIS PROGRAM**, so we know how many riders there are and how many buses to provide. Bus transportation is a privilege and can be revoked at any time due to misconduct during transport.

**\*\*\* DEADLINE FOR BUS SIGN UP IS  
MONDAY, JUNE 1st \*\*\***

# SUMMER 2026 CAMP INFORMATION

## MAIN EVENT CAMP

(entering grades 2-5 in the Fall of 2026)

This program offers various activities and events to capture the interests of all age groups. Nature, music, sports, games, arts & crafts, special events, swimming, and off-site trips are all a part of this well-rounded program. Our staff is composed of qualified, caring adults and mature, experienced, caring college and high school counselors who are dedicated to making your child's camp program a safe and fun experience.

**WHEN:** Monday - Friday, June 29th – August 7th  
(No camp July 3rd)  
Parent/camper orientation will be in June (TBD)

**WHERE:** Lewisboro Town Park  
Rain location: John Jay Middle School

**HOURS:** 9:00AM – 3:00PM

**FEE:** \$1,275 – resident/school district fee  
\$1,700 – non-resident fee (registration accepted after April 13th)

### NOTE:

1. Swim instruction will be provided for all grades.
2. Transportation is provided at no cost from specific points in Lewisboro. Refer to bus information section on page 15 for further details.
3. Main Event Camp serves campers entering grades 2-5 in the Fall of 2026.
4. All groups will be co-ed and separated by grade level (2, 3, 4, and 5).
5. While we will try our hardest to accommodate all friend requests, please be aware that we are required to adhere to very specific camper to counselor ratios as per the Westchester County Department of Health. The younger the campers, the smaller the ratio. Because of these parameters, you may make **one** friend request for your camper and this request cannot be guaranteed.

**ACTIVITY #:** 330104-A1 – 2nd Grade  
330105-A1 – 3rd Grade  
330105-A2 – 4th Grade  
330106-A1 – 5th Grade

## 6TH GRADE HYBRID CAMP

(entering grade 6 in the Fall of 2026)

This program offers sixth graders a transition year between Main Event Camp and Teen Treks Camp. On Mondays and Fridays, 6th graders will join Teen Treks on their local trips to places like Thrillz & Jumpz, The Cave, Climbing Adventure at the Palisades Mall, Grand Prix, and The Castle. From Tuesday – Thursday, 6th graders will join Main Event Camp at Town Park where they will enjoy specials such as music, art, sports, nature, and swim. It's the best of both worlds!

This year we are offering our regular 6-week camp option for our Main Event 6th Grade Hybrid Camp along with the ability to sign up in 3-week sessions! We know that summer schedules can get busy fast, so now you can sign up for either session 1 or session 2 if that works best for your camper.

**\*Please note that if you would like to sign up for another session after signing up for only one, no discount will be honored.**

**WHEN:** Monday - Friday  
Full 6 Weeks: June 29th – August 7th  
Session 1: June 29th – July 17th  
(No camp July 3rd)  
Session 2: July 20th – August 7th  
Parent Orientation will be in June (TBD)

**WHERE:** Lewisboro Town Park  
Rain location: John Jay Middle School

**HOURS:** 9:00AM – 3:00PM (Mon & Fri hours may vary based on trip)

### FEE:

	Resident/ School-District	*Non- Resident	Activity #
Full 6 Weeks	\$1,700	\$2,000	330106-B1
Session 1	\$950	\$1,100	330106-B2
Session 2	\$950	\$1,100	330106-B3

\*Registration accepted after April 13th

### NOTE:

1. Swim instruction will be provided.
2. Transportation is provided at no cost from specific points in Lewisboro. Refer to bus information section on page 15 for further details.
3. All groups will be co-ed.
4. While we will try our hardest to accommodate all friend requests, please be aware that we are required to adhere to very specific camper to counselor ratios as per the Westchester County Department of Health. Because of these parameters, you may make one friend request for your camper and this request cannot be guaranteed.

## AFTER HOURS PROGRAM

(entering grades K-6 in the Fall of 2026)

This program is an extension of the camp day designed to aid the working parent who needs additional care for their child after the camp day ends. The program will be held at Lewisboro Town Park and is for children already enrolled in the Little Explorers and Main Event camps. Arts and crafts, sports, board games, and movies are some of the activities in which campers can expect to partake. In addition, campers will have the opportunity to enjoy swimming at the Town Park Pool.

**WHEN:** Monday-Friday, June 29th – August 7th  
(No camp July 3rd)

**WHERE:** Lewisboro Town Park  
Rain location: TBD

**HOURS:** 3:00PM – 6:00PM

**FEE:** \$625 – resident/school district fee  
\$825 – non-resident fee (registration accepted after April 13th)

### NOTE:

1. Little Explorers Campers (ages 4 and older) will be transported from their camp to Town Park at the end of their camp day.
2. **NO** transportation will be available at the end of this program. Campers must be picked up at the Town Park (or rain location in case of rain).

**ACTIVITY #:** 330108-A1



# SUMMER 2026 CAMP INFORMATION

## SUMMER MINI CAMP

(entering grades K-6 in the Fall of 2026)

With day camp over in early August, we are offering a full day camp program to add to the summer fun. Campers will be given the opportunity to participate in sports, arts & crafts, and other activities. Swimming lessons will be provided as well as free swim time. Lunch will be provided by the concessionaire on Friday only.

**WHEN:** Monday - Friday, August 10th – 14th  
Monday - Friday, August 17th – 21st

**WHERE:** Lewisboro Town Park  
Rain location: TBD

**HOURS:** 9:00AM – 4:00PM

**FEE:** \$450/week – resident/school district fee  
\$850/ both weeks – resident/school district fee

### NOTE:

1. Please bring a bathing suit, towel, sunscreen, sneakers, and water every day.
2. **No bus transportation** – Campers must be dropped off in the morning and picked up in the afternoon.

**ACTIVITY #:** **330201-A1 (8/10 – 8/14)**  
**330201-A2 (8/17 – 8/21)**  
**330201-A3 (Both weeks)**

## TEEN TREKS CAMP

(entering grades 7-10 in the Fall of 2026)

Registration for all Town and School-District residents will begin on **Saturday, January 31st, 2026** from 10:00AM – 11:30PM at our office located at 99 Elmwood Road, South Salem, NY. We are available for in-person registration Monday – Friday from 9:00AM – 4:30PM, including extra hours on Thursday, February 5th from 4:30PM – 7:30PM.

We will continue to offer online registration for Teen Treks, which will be live at 10:00AM on Saturday, January 31st. In addition to the online registration, you will need to fill out the necessary paperwork for your camper to be able to attend. This paperwork includes the camper registration form, behavior policy, trip permission form, and a copy of your child's immunizations from their doctor. All forms must be returned to our office **no later than Friday, March 6th**. Space is limited and we anticipate that spots will go fast. Please remember that there is a 3% service fee for all credit card transactions.

There will be two buses for our 5-Day program (Monday - Friday) and two buses for our 3-Day program (Tuesday - Thursday). The 5-Day program will go on trips to local facilities (bowling, ice skating, arcades, etc.) on Mondays and Fridays and will join the 3-Day campers on Tuesdays - Thursdays on the more traditional trips in the tri-state area (amusement parks, tours, baseball games, etc.)

This year we are offering our regular 6-week camp option for Teen Treks along with the ability to sign up in 3-week sessions! We know that summer schedules can get busy fast, so now you can sign up for either session 1 or session 2 if that works best for your camper. Our overnight will continue to be in the second session as well as the bigger amusement parks. We will,

however, be moving a bigger amusement park trip up to our first session as well.

**\*Please note that if you would like to sign up for another session after signing up for only one, no discount will be honored.**

**WHEN:** **Teen Treks 3 Day**  
Tuesday - Thursday  
Full 6 Weeks: June 30th - August 6th  
Session 1: June 30th – July 16th  
(no camp on 7/3)  
Session 2: July 21st – August 6th

**Teen Treks 5 Day**  
Monday - Friday  
Full 6 Weeks: June 29th - August 7th  
Session 1: June 29th – July 17th  
(no camp on 7/3)  
Session 2: July 20th – August 7th  
Parent Orientation will be in June (TBD)

**WHERE:** John Jay High School (and various locations throughout the tri-state area)

**HOURS:** 9:00AM – 3:00PM (subject to change based on each trip)

### FEE:

Teen Treks 3 Day	Resident	School-District	Non-Resident	Activity #
Full 6 Weeks	\$1,950	\$2,200	\$2,450	<b>330107-A1</b>
Session 1	\$1,125	\$1,250	\$1,375	<b>330107-A2</b>
Session 2	\$1,275	\$1,400	\$1,525	<b>330107-A3</b>

Teen Treks 5 Day	Resident	School-District	Non-Resident	Activity #
Full 6 Weeks	\$2,500	\$2,750	\$3,000	<b>330107-B1</b>
Session 1	\$1,400	\$1,525	\$1,650	<b>330107-B2</b>
Session 2	\$1,550	\$1,675	\$1,800	<b>330107-B3</b>

### NOTE:

1. Transportation is provided at no cost from specific points in Lewisboro. Refer to bus information section on page 15 for further details.
2. While we will try our hardest to accommodate all friend requests, please be aware that we are required to adhere to very specific camper to counselor ratios as per the Westchester County Department of Health. Groups **MUST** have a 1:12 counselor to camper ratio. Because of this, we always prioritize friend requests over group demographics. Your camper may be placed with campers older/younger, or of a different gender, but will have their **one** requested friend guaranteed. Please only write one request on your registration form. If you write multiples, only the **first** will be honored.
3. Friend requests may not be changed after registration unless there are serious circumstances that warrant a change. As you can imagine, creating exact groups of 12 campers while juggling friend requests is a time-consuming process. One change after groups have already been made can easily create a domino effect.

# PROGRAMS FOR 50+

Jenifer Brown, *Senior Adult Director*

For more information on day trips or the senior adult program,  
please call 232-6162 or email [seniors@lewisborony.gov](mailto:seniors@lewisborony.gov)

The Lewisboro Senior Adult Programs has much to offer those aged 50 and older.  
We invite you to read on and encourage you to participate in our program offerings.

## MEETINGS

Would you like to learn to play Mah-Jongg, participate in Tai Chi or Essentrics, create a Decoupage masterpiece, participate in a book group discussion, share your knitting project and enjoy a warm cup of coffee with new and old friends?

Join the LEWISBORO SENIORS at our WEEKLY MEETINGS HELD EVERY WEDNESDAY at Stevens Memorial Church, 8 Shady Lane, South Salem from 9:30AM – 2:30PM.

Our meetings feature some of the activities mentioned above and various programs and events each week. Kids Community Club of Lewisboro has become a favorite activity for all involved. Children ages 5-12 visit providing different projects to do with the seniors. We are fortunate to have these scheduled visits four times a year. Painting holiday cards, jewelry making, guest speakers, BINGO and holiday celebrations are some of the other activities offered. STOP BY ANYTIME!

**Essentrics** – 11:00AM – 11:45AM – First Wednesday with June Bird.

**Book Group** – 11:00AM – 12:00PM – Third Wednesday with Cindy Rubino, Lewisboro Librarian.

**Tai Chi** – 10:30AM – 11:30AM – Second and Fourth Wednesday with Rod Barfield.

**Blood Pressure Check** – 11:00AM – 12:15PM – Fourth Wednesday by RN from Northwell Health.



## BUS TRANSPORTATION – Retail/Grocery Shopping and Senior Meeting

Led by our very dedicated bus driver/chaperone, Doreen Svendsen, the Town of Lewisboro offers bus transportation twice a week with door to door pick up service: Tuesdays will be for grocery/retail shopping and Wednesdays will be the senior adult meeting. Please call the office at least one day in advance to make a reservation for the bus or to get a schedule of shopping days.



# PROGRAMS FOR 50+

Jenifer Brown, *Senior Adult Director*

For more information on day trips or the senior adult program,  
please call 232-6162 or email [seniors@lewisborony.gov](mailto:seniors@lewisborony.gov)

LEWISBORO  
RECREATION  
DEPARTMENT

## OUTREACH PROGRAM

Our responsibility is to reach out to the growing number of homebound senior adults in Lewisboro. Through this program, access to needed information and referral services are available. If you or someone you know is in need of services such as home delivered meals, heating assistance, Medicare/Medicaid information, to name a few, please contact us.



Transportation to and from medical appointments can be arranged Monday – Friday with the exception of Wednesdays. Hours for this transportation must be within office hours and are subject to availability. To make arrangements for transportation, please call our office.

Medical equipment is available for loan including wheelchairs, walkers, canes, bedrails, shower chairs and crutches.

The “**Are You Okay?**” telephone reassurance system is available to all our seniors. Daily telephone calls to each participant are made to ensure an individual is safe and well. Confidentiality is always guaranteed.

The “**File of Life**” is available through the Senior Adult Program and the Outreach Program. It is an informational tool to provide assistance during a medical crisis. Everyone should have one. The large info file attaches to the refrigerator and the small info file belongs in your wallet at all times.

## NEWSLETTER

The Senior Adult Newsletter is emailed, printed and mailed out each month highlighting the month's activities and keeps you up to date on upcoming events and trips. To receive your monthly copy of the newsletter, simply phone the Recreation Office to get your name added to the mailing list.



## UPCOMING TRIPS AND EVENTS

A listing of 2026 events and upcoming trips will be available in the Spring/Summer Brochure. With the winter months upon us, program cancellation announcements will be made by phoning the Recreation Office or on our website at [www.lewisbororecreation.com](http://www.lewisbororecreation.com).



# REGISTRATION FORMS

## ACTIVITY REGISTRATION FORM

(PLEASE PRINT AND FILL OUT COMPLETELY)

Adult Name \_\_\_\_\_

Mailing Address \_\_\_\_\_ City \_\_\_\_\_ Zip \_\_\_\_\_

Telephone (Day) \_\_\_\_\_ (Evening) \_\_\_\_\_

Emergency Name \_\_\_\_\_ (Telephone) \_\_\_\_\_

Elementary School Area (Check one): ☐ Increase Miller ☐ Meadow Pond ☐ Katonah

**RESIDENT STATUS:** ☐ Town of Lewisboro Resident

(Check one) ☐ Katonah/ Lewisboro School District **Email**

Participant Name Last	First	Sex	Age	D.O.B.	Activity Number	Activity Name	Grade	Fees

**Form of Payment:** ☐ CASH ☐ CHECK ☐ CC **NO REFUND POLICY** **TOTAL FEES: \$** \_\_\_\_\_

Make checks or money orders payable to **TOWN OF LEWISBORO** Allergies/Medical Conditions \_\_\_\_\_

### By Mail:

Town of Lewisboro  
Parks & Recreation Dept.  
99 Elmwood Road  
South Salem, NY 10590

**GENERAL RELEASE:** The undersigned hereby releases the Town of Lewisboro, its Town Board, Parks and Recreation Department, employees and volunteers thereof, of any responsibility should an accident or injury occur to the afore named participant as a result of participation in the aforementioned program sponsored by the Lewisboro Parks and Recreation Department.

Parent/Guardian  
Signature \_\_\_\_\_ Date \_\_\_\_\_

## TELEPHONE RESOURCE

**POLICE, FIRE, AMBULANCE EMERGENCY** ..... **DIAL 911**

New York State Police ..... **277-3651**

Town of Lewisboro (Non-emergency number) ..... **763-8903**

**FIRE AND RESCUE** ..... **DIAL 911**

South Salem ..... **763-3700**

Goldens Bridge ..... **232-4600**

Vista ..... **533-2727**

**AMBULANCE** ..... **DIAL 911**

Lewisboro VAC ..... **763-3574**

Vista FD ..... **533-2727**

### HOSPITALS

Northern Westchester Emergency Room ..... **666-1251**

Norwalk ..... **203-852-2000**

Danbury ..... **203-797-7000**

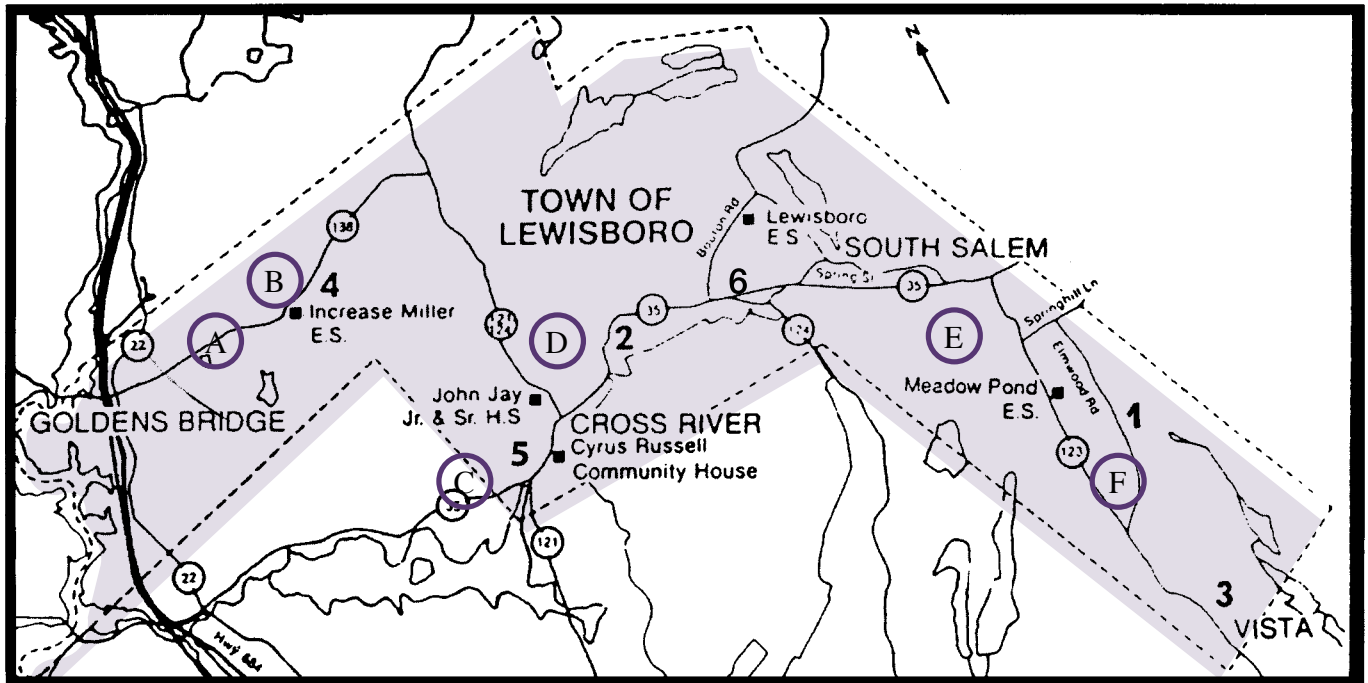
**POISON CONTROL** ..... **800-336-6997**

**SUICIDE AND CRISIS PREVENTION** ..... **946-0121**

**CHILD ABUSE** ..... **800-342-3720**

**WESTCHESTER COUNTY PARKS & RECREATION** ..... **864-PARK**

## FACILITIES



### 1. RECREATION OFFICE/ONATRU FARM PARK

Parks & Recreation Department  
99 Elmwood Road, South Salem - (914) 232-6162  
Four multi-purpose fields for football, soccer, softball, field hockey, lacrosse, playground equipment, four soft surface tennis courts, hiking trails, restroom facilities, composting toilets and picnic pavilion.  
\* Restrooms are not available November-April

### 2. TOWN PARK

1079 Old Post Road (Route 35), South Salem  
Ballfield, swimming pool complex, two basketball courts, two sand volleyball courts, playground equipment, picnic pavilion, pond for fishing, hiking trails and composting toilets.  
NOTE: Basketball and volleyball courts have lights for night time use.

### 3. VISTA FIELD

477 Smith Ridge Road (Route 123), South Salem  
Ballfield and toddler playground equipment.

### 4. FOX VALLEY PARK

4 Indian Hill Road (Route 138 and Indian Hill Road), Golden Bridge  
Four all-weather tennis courts, two multipurpose fields for baseball, football, soccer and softball, fitness trail, hiking trails, restroom facilities, picnic pavilion and playground.  
\* Restrooms are not available November-April.

### 5. NEIL VREELAND MEMORIAL PLATFORM TENNIS COURTS

John Jay High School, 60 North Salem Road, Cross River  
Three platform tennis courts. Lights for night time use. Permits are required.

### 6. LEWISBORO RECREATION GYM

79 Bouton Road, South Salem.

## TOWN PRESERVES

For more information, please go to the town's website at [www.lewisborony.gov](http://www.lewisborony.gov).

A. Falcon Ridge  
B. Brownell Preserve  
C. JJHS Cross Country and Community Trail

D. Old Field Preserve  
E. Leon Levy Preserve  
F. Onatru Farm Preserve